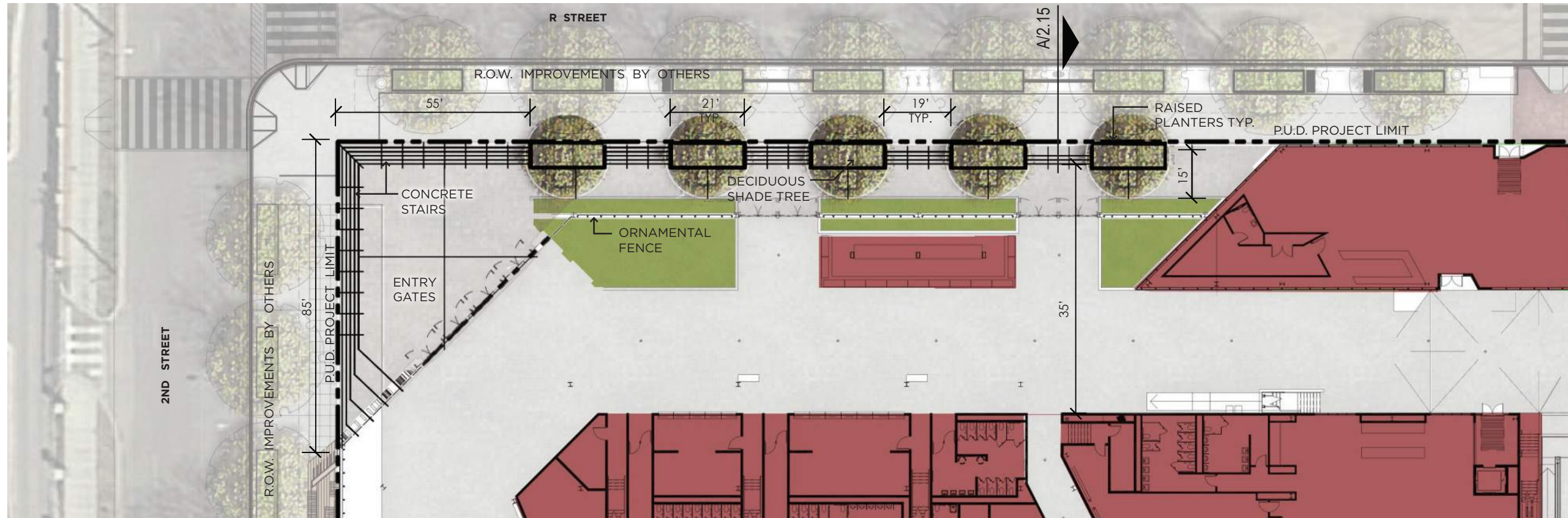


NORTHWEST PUBLIC SPACE

OFFSET PERIMETER TO
CREATE PUBLIC OPENS
SPACE

LARGE OPEN CORNER
SPACE WITH ICONIC
D.C. UNITED LETTERS





LEGEND

- 5' x 10" GRAY UNIT PAVERS
- C.I.P. CONCRETE PAVEMENT - INTEGRAL COLOR 'CARBON'
- C.I.P. CONCRETE PAVEMENT - GRAY
- NATURAL TURF
- DECOMPOSED GRANITE
- DECIDUOUS SHADE TREE
- ORNAMENTAL TREE
- PEDESTRIAN LIGHT
- PLAZA TABLES/ CHAIRS
- BENCH
- PIPE BOLLARD
- MILLED GRANITE BLOCK - 3W x 3D x 2H
- BIKE RACK

NOTES

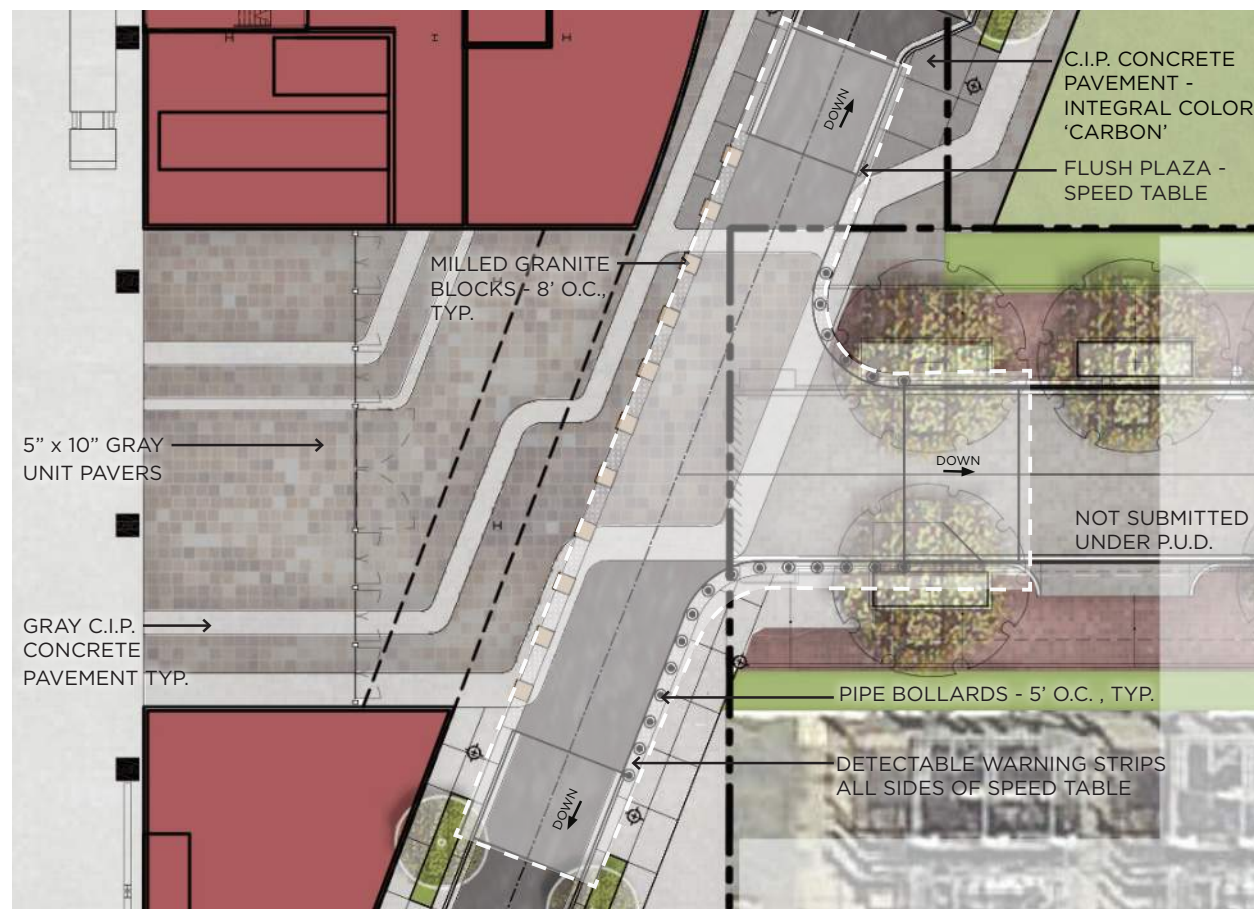
1. STREETSCAPE MATERIALS/DETAILS ARE SHOWN IN CONCEPT FOR ILLUSTRATIVE PURPOSES. THE FINAL MATERIALS OF THE SITE STADIUM IMPROVEMENTS WILL BE SELECTED DURING DETAILED DESIGN PHASES OF WORK AND CONFORM WITH APPLICABLE DESIGN AND PERMITTING STANDARDS.
2. PLANT SPECIES SELECTIONS IDENTIFIED ON THE PLANS/ SCHEDULES ARE SHOWN TO ILLUSTRATE DESIGN INTENT ONLY. THE PURPOSE IS TO GENERALLY DEFINE PLANT SIZE, CHARACTER, AND LOCATIONS. REFINEMENTS TO THE PLANTING DESIGN AND FINAL SELECTION OF ALL PLANT MATERIALS CONSISTENT WITH THE SPECIES SHOWN SHALL BE DEVELOPED DURING DETAILED DESIGN PHASES OF WORK.
3. ALL R.O.W. IMPROVEMENTS ARE SHOWN FOR ILLUSTRATIVE PURPOSES AND ARE BY OTHERS.
4. BUILDING LAYOUTS ARE ILLUSTRATIVE ONLY AND SUBJECT TO CHANGE ON FINAL PLAN.
5. PARCEL B IS NOT A PART OF STADIUM PUD SUBMISSION, DESIGN INTENT SHOWN FOR REFERENCE ONLY.
6. DISTRICT OF COLUMBIA RESPONSIBLE FOR DESIGN OF R.O.W. IMPROVEMENTS, DESIGN INTENT SHOWN FOR REFERENCE ONLY.

POPULOUS
Marshall Moya Design



DC UNITED SOCCER STADIUM
100 Potomac Avenue, SW
Washington, DC 20024

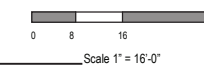
B NORTHWEST PLAZA ENLARGEMENT
Scale 1"=16'

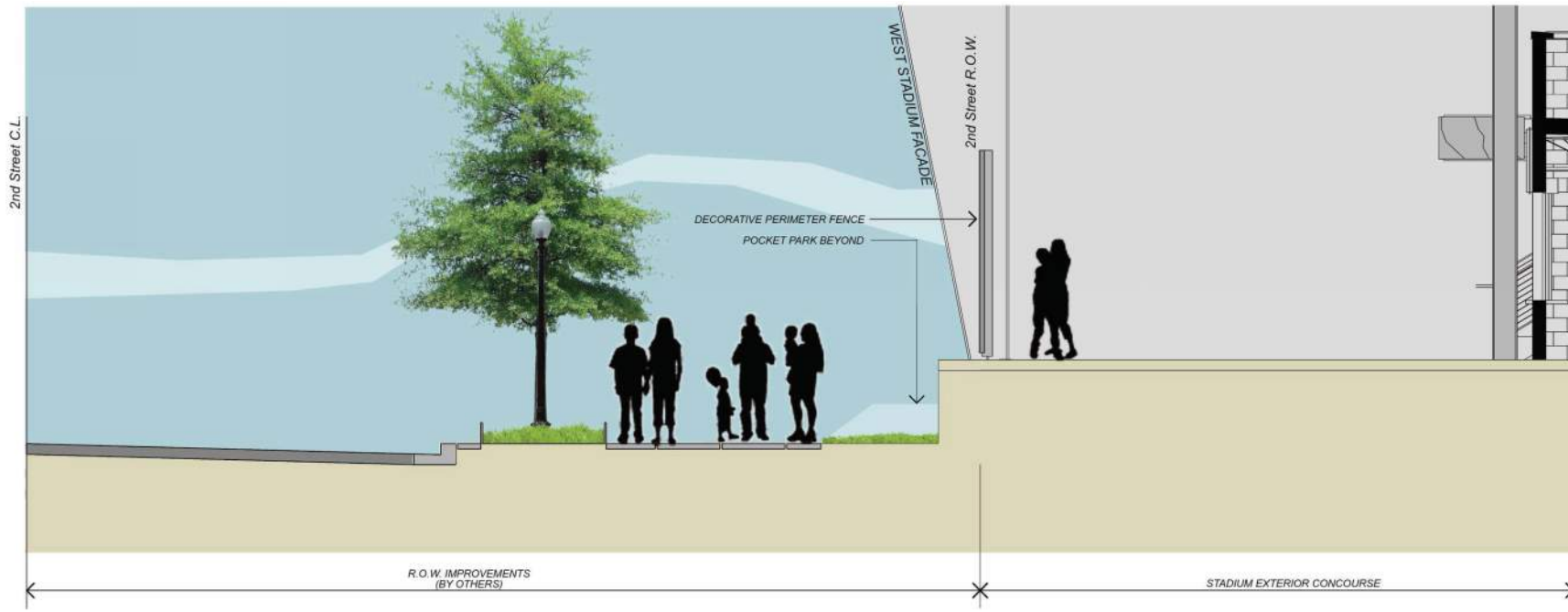


A EAST ENTRY ENLARGEMENT
Scale 1"=16'

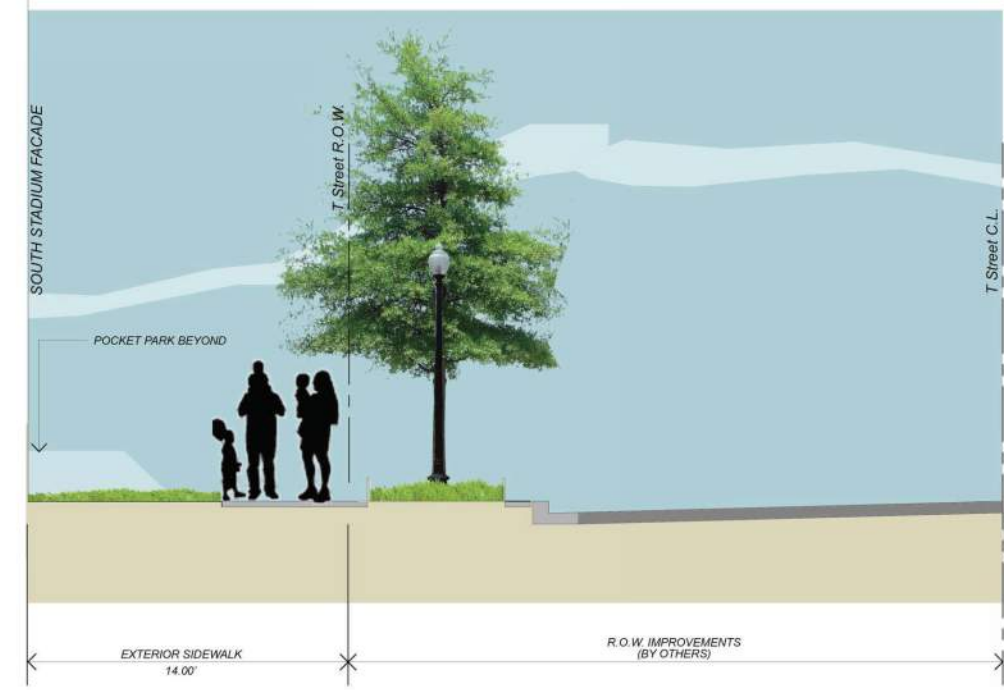
BOTANICAL NAME	COMMON NAME	QTY	SIZE	ROOT	SPACING
<i>Platanus x acerifolia 'Bloodgold'</i>	London Planetree	5	3" cal.	B&B	Per Plan
<i>Cercis canadensis</i>	Eastern Redbud	27	3" cal.	B&B	Per Plan
<i>Liriope muscari 'Big Blue'</i>	Big Blue Liriope	695	1 quart	Cont.	12"

C PLANTING SCHEDULE

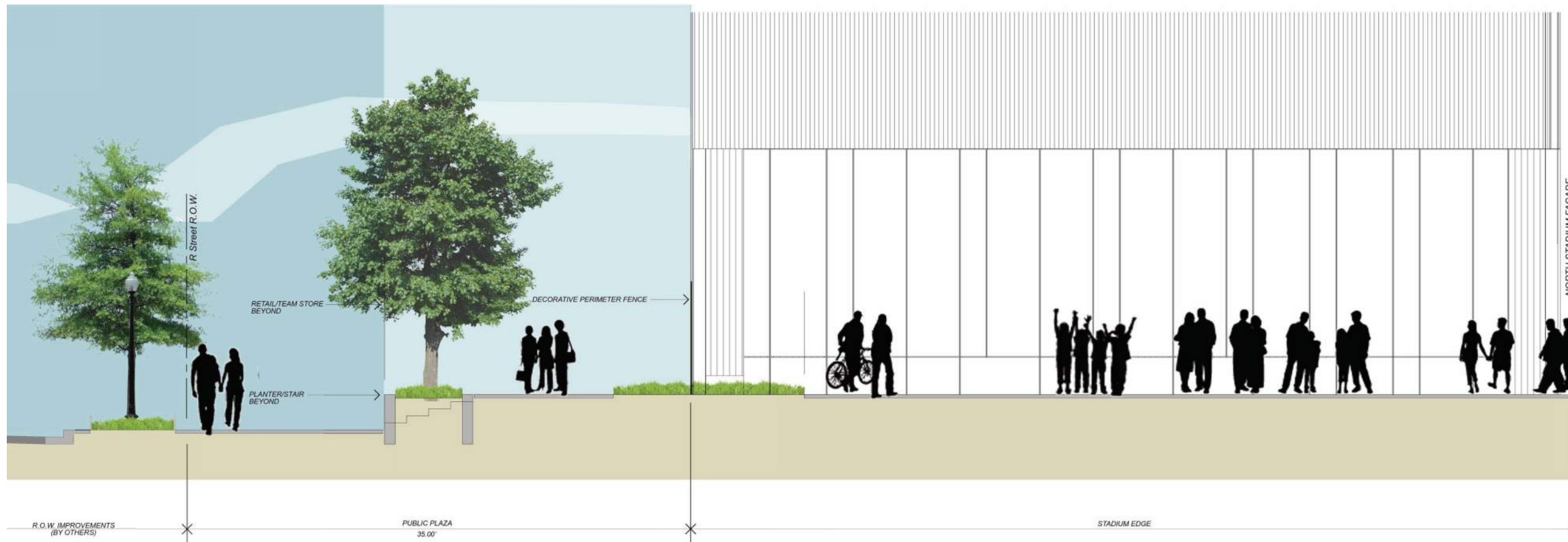




C 2nd STREET TO WEST STADIUM FAÇADE
Section Looking North



B T STREET TO SOUTH STADIUM FAÇADE
Section Looking East



A R STREET TO NORTH STADIUM FAÇADE
Section Looking East

NOTES

1. STREETScape MATERIALS/DETAILS ARE SHOWN IN CONCEPT FOR ILLUSTRATIVE PURPOSES. THE FINAL MATERIALS OF THE SITE STADIUM IMPROVEMENTS WILL BE SELECTED DURING DETAILED DESIGN PHASES OF WORK AND CONFORM WITH APPLICABLE DESIGN AND PERMITTING STANDARDS.
2. PLANT SPECIES SELECTIONS IDENTIFIED ON THE PLANS/ SCHEDULES ARE SHOWN TO ILLUSTRATE DESIGN INTENT ONLY. THE PURPOSE IS TO GENERALLY DEFINE PLANT SIZE, CHARACTER, AND LOCATIONS. REFINEMENTS TO THE PLANTING DESIGN AND FINAL SELECTION OF ALL PLANT MATERIALS CONSISTENT WITH THE SPECIES SHOWN SHALL BE DEVELOPED DURING DETAILED DESIGN PHASES OF WORK.
3. ALL R.O.W. IMPROVEMENTS ARE SHOWN FOR ILLUSTRATIVE PURPOSES AND ARE BY OTHERS.
4. BUILDING LAYOUTS ARE ILLUSTRATIVE ONLY AND SUBJECT TO CHANGE ON FINAL PLAN.
5. PARCEL B IS NOT A PART OF STADIUM PUD SUBMISSION, DESIGN INTENT SHOWN FOR REFERENCE ONLY.
6. DISTRICT OF COLUMBIA RESPONSIBLE FOR DESIGN OF R.O.W. IMPROVEMENTS, DESIGN INTENT SHOWN FOR REFERENCE ONLY.

POPULOUS
Marshall Moya Design



DC UNITED SOCCER STADIUM
100 Potomac Avenue, SW
Washington, DC 20024



B NEIGHBORHOOD PARK TERRACE
Section Looking North



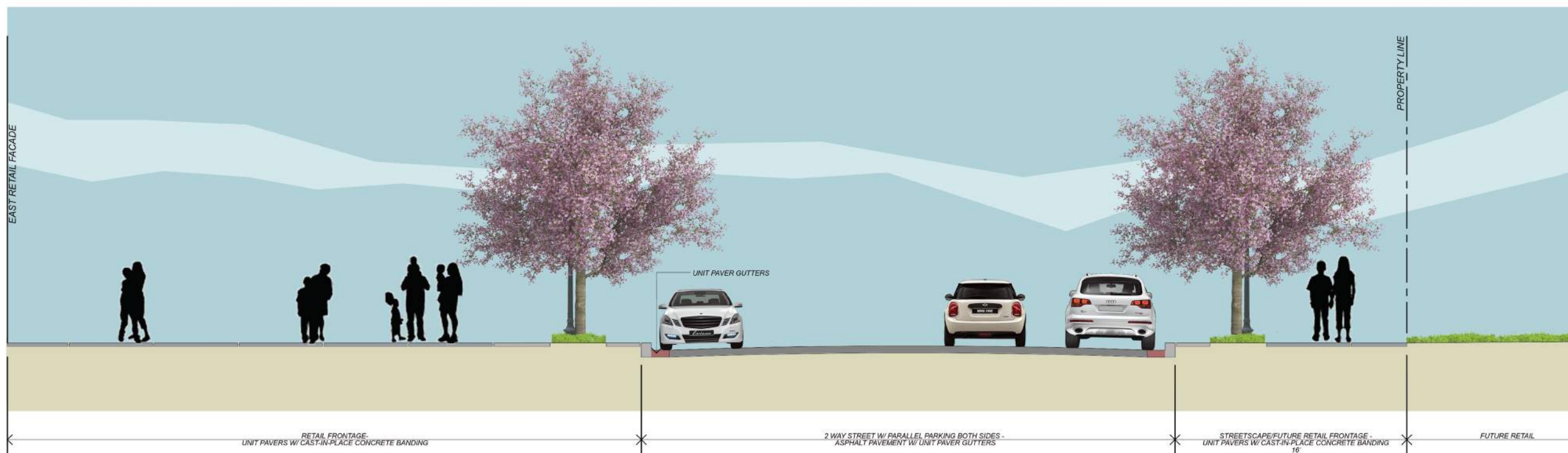
NOTES

- STREETSCAPE MATERIALS/DETAILS ARE SHOWN IN CONCEPT FOR ILLUSTRATIVE PURPOSES. THE FINAL MATERIALS OF THE SITE STADIUM IMPROVEMENTS WILL BE SELECTED DURING DETAILED DESIGN PHASES OF WORK AND CONFORM WITH APPLICABLE DESIGN AND PERMITTING STANDARDS.
- PLANT SPECIES SELECTIONS IDENTIFIED ON THE PLANS/ SCHEDULES ARE SHOWN TO ILLUSTRATE DESIGN INTENT ONLY. THE PURPOSE IS TO GENERALLY DEFINE PLANT SIZE, CHARACTER, AND LOCATIONS. REFINEMENTS TO THE PLANTING DESIGN AND FINAL SELECTION OF ALL PLANT MATERIALS CONSISTENT WITH THE SPECIES SHOWN SHALL BE DEVELOPED DURING DETAILED DESIGN PHASES OF WORK.
- ALL R.O.W. IMPROVEMENTS ARE SHOWN FOR ILLUSTRATIVE PURPOSES AND ARE BY OTHERS.
- BUILDING LAYOUTS ARE ILLUSTRATIVE ONLY AND SUBJECT TO CHANGE ON FINAL PLAN.
- PARCEL B IS NOT A PART OF STADIUM PUD SUBMISSION. DESIGN INTENT SHOWN FOR REFERENCE ONLY.
- DISTRICT OF COLUMBIA RESPONSIBLE FOR DESIGN OF R.O.W. IMPROVEMENTS, DESIGN INTENT SHOWN FOR REFERENCE ONLY.

POPULOUS
Marshall Moya Design



DC UNITED SOCCER STADIUM
100 Potomac Avenue, SW
Washington, DC 20024



A PEDESTRIAN CONNECTION EAST SIDE OF STADIUM
Section Looking North

